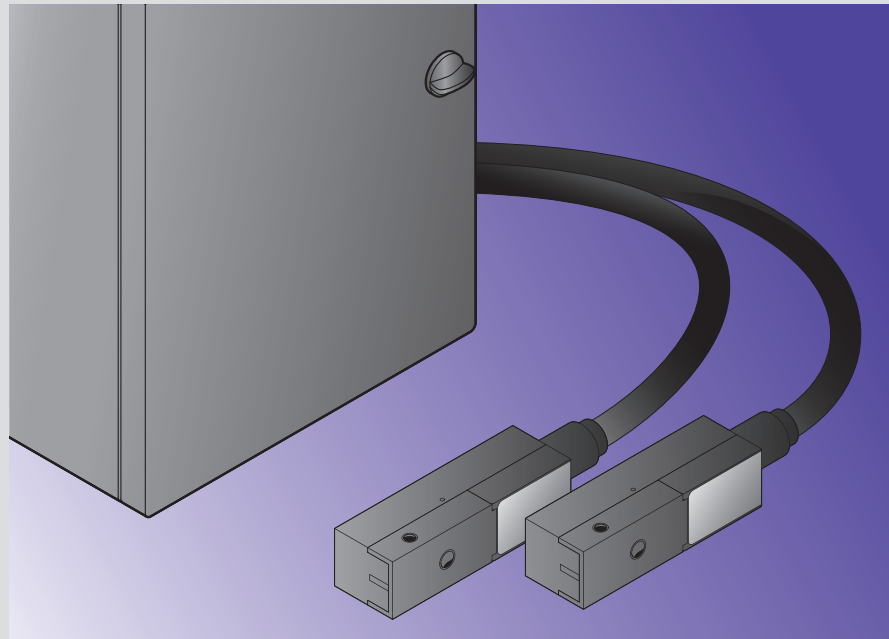


Complete Control with AJWin



Increase Your Productivity!

The AJWin program was developed in close collaboration with our clients over many years in order to fulfill the printing needs of a variety of industries.

It can be used with the **alphaJET C** and **alphaJET E** inkjet printers from KBA-Metronic® AG.

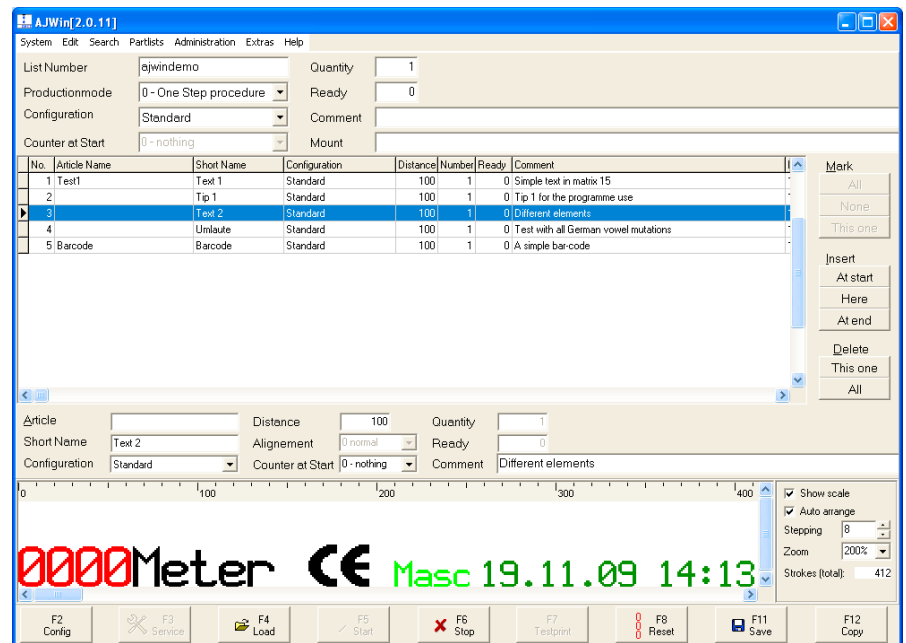
Flexible Design

With **AJWin**, you can easily create and manage your print texts from the comfort of a PC which you are used to working on. Doing so means you will avoid making errors when printing and save time.

Stay on top of everything – that's just one of the many benefits of using **AJWin**.

Easy to Use

The **alphaJET C** and **alphaJET E** printers are usually operated using terminals that are integrated into the printer. Depending on the field of application, it can be much more advantageous to control the printer using a PC, however.



View of a batch printing list with various print texts

iret

Gesellschaft zur Entwicklung
elektronischer Steuerungen mbH

Features

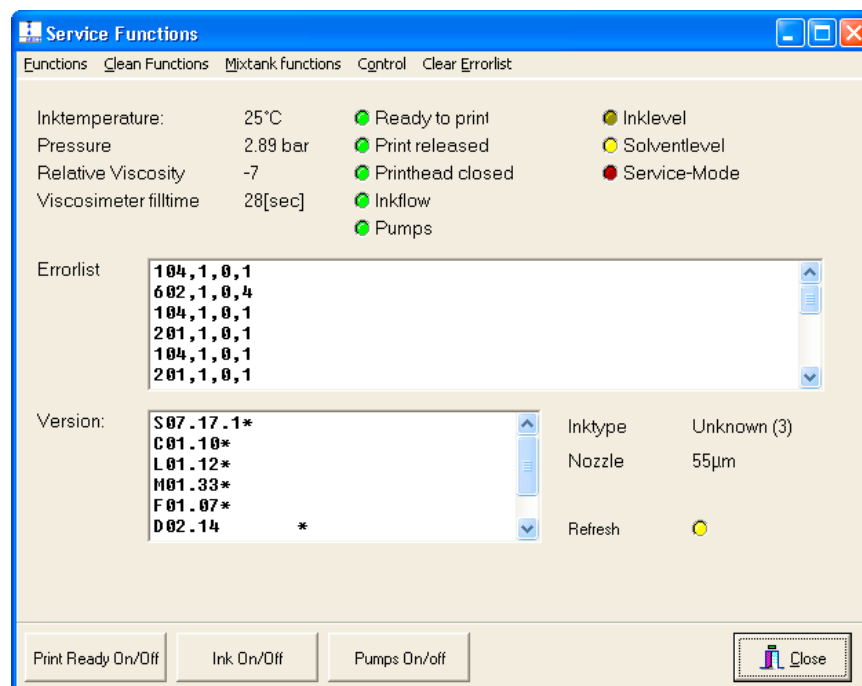
AJWin is the only program to offer this combination of benefits:

- **Text Lists:** Easy to create
- **Operating Mode:** Main window can be customized to your area of application
- **WYSIWYG:** Design texts easily and without test prints
- **Integration:** Easily import text and graphics from a variety of applications
- **Configuration:** Automatically sets all parameters at the start of printing
- **Save Templates:** With **AJWin** you can save and manage an almost unlimited number of text templates

Easy Operation – Reliable Implementation

AJWin makes designing print texts easy and managing print jobs straightforward. In addition, the program has the following features:

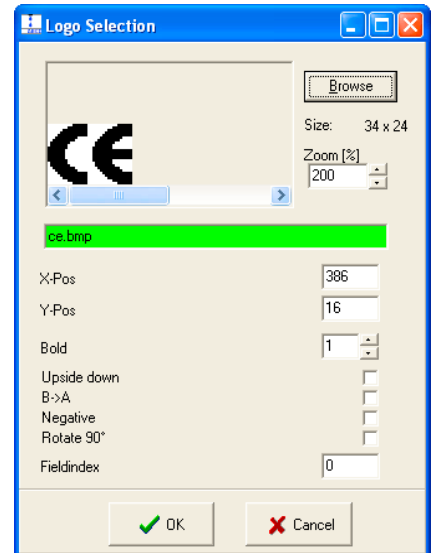
- **RS-232 port can be selected freely**
- **Customizable print areas**
- **Predefined fields for logos, barcodes, counters, texts, dates, times, and other production data**
- **Variable fields for individual database queries**
- **Data saved in sqlite format (open source)**
- **Network-compatible database**
- **Can be used with TCP <-> RS-232 gateways**
- **Quickly switch between print jobs through list selection**
- **Log changes to text**
- **Bilingual (German/English), other languages optional**
- **Control multiple printers at the same time (optional)**
- **The user interface and configuration can be customized (optional)**
- **Production log (optional)**



Service and Information Menu

iret

Gesellschaft zur Entwicklung
elektronischer Steuerungen mbH



Importing a Logo

Would You Like More Information?

Or are you looking for a place to purchase **AJWin**?

Then don't hesitate to get in touch with us.

We'd be glad to help.

iret GmbH

Paul-Engelhard-Weg 50A
D - 48167 Münster

Phone:
+49 (0) 251 615138

Fax:
+49 (0) 251 6176 31

Internet:
www.iret.de