

# Manual



***Software CaymanToolboxBasic***

***Version 1.3.0***



***Date 03/25/2022***

***iret***

*Gesellschaft zur Entwicklung  
elektronischer Steuerungen mbH*

© 03/2022 DE

iret GmbH  
Paul Engelhard Weg 50a  
D-48167 Münster

 +49 .251 .61 51 38  
 +49.251 .61 76 31  
E-Mail [info@iret.de](mailto:info@iret.de)  
Internet [www.iret.de](http://www.iret.de)

---

<b>1</b>	<b>Introduction.....</b>	<b>5</b>
1.1	Overview of applications.....	5
<b>2</b>	<b>Installation and launch of the Toolbox.....</b>	<b>6</b>
2.1	Installation.....	6
2.2	Licensing.....	6
<b>3</b>	<b>Common functions in all tools.....</b>	<b>7</b>
<b>4</b>	<b>Setup settings of the tools.....</b>	<b>8</b>
4.1	Common settings of all tools.....	8
4.1.1	Common settings.....	8
4.1.2	Cayman-settings.....	9
<b>5</b>	<b>CWL-ArticleScan.....</b>	<b>10</b>
5.1	Example article list scan.....	10
5.1.1	Step 1: Scanning an article number.....	10
5.1.2	Step 2: Troubleshooting if no Cayman file is available.....	10
5.1.3	Step 3: Loading the article list.....	10
5.1.4	Checking the raw material with "CWL-MaterialScan.....	11
5.2	Specific settings for CWL-ArticleScan.....	11
5.2.1	Scanner operation.....	11
5.3	Further explanations.....	12
5.3.1	Technical explanations.....	12
5.3.2	Color representation of the input fields during scanning.....	12
5.3.3	Limitations.....	12
5.3.4	FAQ typical errors / problems.....	12
<b>6</b>	<b>CWL-Harness.....</b>	<b>13</b>
6.1	Selection based on article name and raw material.....	13
6.1.1	Scanning an 'article number.....	13
6.1.2	Selection of article names and raw material:.....	13
6.1.3	Entering the number of pieces to be produced:.....	14
6.2	Specific settings for CWL-Harness.....	14
6.3	Further explanations.....	14
6.3.1	Technical explanations.....	14
6.3.2	Color representation of the input fields during scanning.....	14
6.3.3	Limitations.....	14
6.3.4	FAQ typical errors / problems.....	15
<b>7</b>	<b>CWL-MarkingEditor.....</b>	<b>16</b>
7.1	Overview.....	16
7.2	Edit marking texts.....	16
7.2.1	Loading, displaying and editing text areas.....	16
7.2.2	Adding rows / columns.....	17
7.2.3	Selection of Column type.....	18
7.2.4	Assembling a field from elements:.....	18
7.2.5	Resizing the print fields.....	19
7.3	Transfer data back to Cayman.....	20
7.4	Further explanations.....	20
7.4.1	Technical explanations - Integration of the MarkingEditor in Cayman.....	20
7.4.2	Limits.....	21
7.4.3	FAQ typical errors / problems.....	21
<b>8</b>	<b>CWL-MaterialScan.....</b>	<b>23</b>
8.1	Usage.....	23
8.1.1	Example.....	23
8.2	Specific settings fro CWL-MaterialScan.....	24
8.3	Further explanations.....	25
8.3.1	Behavior of different Cayman versions:.....	25

---






<b>9</b>	<b>CWL-Tools.....</b>	<b>26</b>
9.1	Restricted user rights.....	26
9.2	Loading individual article lists or list collections.....	26
9.2.1	Area operations.....	27
9.2.2	Material and processing.....	28
9.2.3	Split article list(s).....	29
9.2.4	Export article list.....	30
9.3	Tool-specific settings.....	31
9.3.1	Output mode:.....	31
9.3.2	Minimize Cayman during processing.....	31
9.4	Further explanations.....	31
9.4.1	Technical explanations.....	31
9.4.2	Limits.....	32
9.4.3	FAQ typical errors / problems.....	32

## 1 Introduction

The CaymanToolBoxBasic is a collection of applications designed to help users of the Schleuniger Cayman software with their daily work.

It requires the "Cayman" software from Schleuniger for operation (from version 12).

### 1.1 Overview of applications

Symbol	Name	Brief description
	CWL-ArticleScan	Allows fast capture / reading / selection of articles or article lists using a barcode scanner or keyboard.
	CWL-Harness	Enables article selection by article name and raw material as well as the compilation of new lists. At the same time, a new production quantity can be defined.
	CWL-MarkingEditor	Enables the graphical editing of multi-line, multi-column marking texts for thermal transfer and laser printers Supported are texts, logos, barcodes and variable elements such as time, date, counter etc. The editor can be started directly from Cayman. All text areas of a selected cable are transferred to the editor and returned to Cayman after editing.
	CWL-MaterialScan	A tool to validate the raw material: Set up (scanned) and required raw material is compared, in case of mismatch a warning message is displayed and production is stopped.
	CWL-Tools	Enable extensive, list-based editing of articles in Cayman article lists: <ul style="list-style-type: none"> <li>• Renaming of raw material or production processes</li> <li>• text replacements in text areas</li> <li>• exact text positioning measured from the left side of the cable</li> <li>• splitting of large CWL files into individual CWL files for each article</li> <li>• export of CWL files in tabular form (CSV file)</li> </ul>

## 2 Installation and launch of the Toolbox

## 2 Installation and launch of the Toolbox

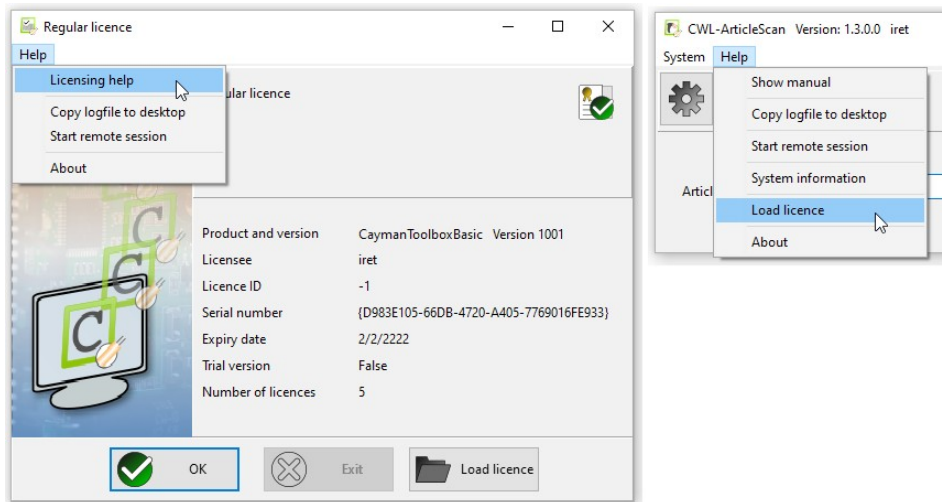
### 2.1 Installation

The setup installs all components of the software collection. The recommended installation location is a directory in the root directory of c:, e.g. c:\CaymanToolbox\. The installation directory will be created during the installation process. It is recommended to close Cayman before installing the Toolbox.

### 2.2 Licensing

The licensing of the CaymanToolbox software is described in a separate document. You can display this document in the license dialog (menu 'Help', menu item 'Licensing help').

The license dialog is displayed in the demo version of the Toolbox at program start. You can also reach it via the program main menu 'Help', menu item 'Load licence'.

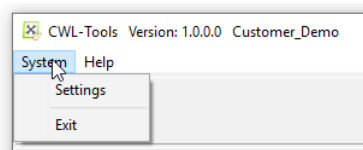


### 3 Common functions in all tools

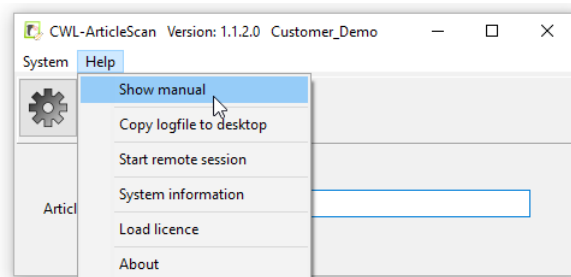
The main windows of all tools have a similar look and share some functions:

The window header shows the name of the respective tool, next to it the version number and information about the license or customer or the status "\*\*\* DEMO \*\*\*" in demo versions.

At program start all tools show an identical main menu with the items "System" and "Help":



Function	Description
System: Settings	Opens the dialog for common or tool-specific settings.
System: Exit	Exits the program.



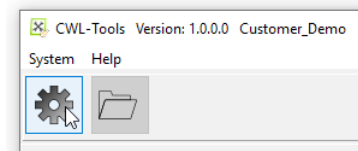
Function	Description
Help: Show manual	Displays this document. A pdf viewer must be installed on the system to display the document.
Help: Copy logfile to desktop	Copies a logfile of the previous program run to the computer desktop. This function is mostly for maintenance purposes.
Help: Start remote session	Starts remote maintenance.
Help: System information	Shows information (e.g. paths) to required system files.
Help: Load license	Opens the dialog window for loading a license.
Help: About	Shows program and license information.





## 4 Setup settings of the tools

The setting dialogs are called up either by clicking on the gear symbol or via the menu item "System / Settings".



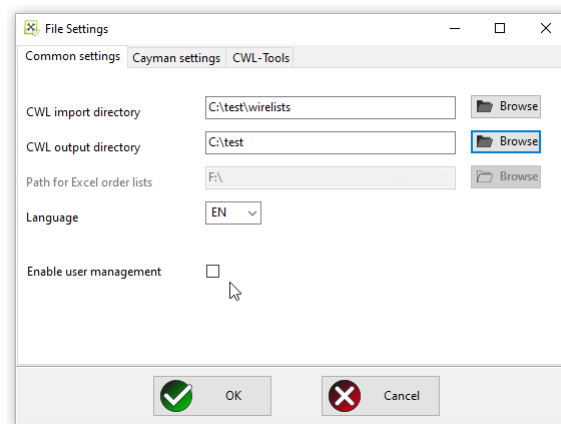
The tools have both common and tool-specific settings. The common settings can be found in the setup dialog under the two left tabs "Common Settings" and "Cayman Settings". The tool-specific settings can be found under other tabs to the right and are only available in the respective tool.

With exception of language selection all settings will take effect when the dialog is closed by the OK button.

### 4.1 Common settings of all tools

The "Common Settings" and "Cayman Settings" tabs can be found in all tools. They control the output of the edited articles or lists, the language settings and Cayman-specific settings.

#### 4.1.1 Common settings



Various file directories are defined here:

Function	Description
CWL import directory	Here the tools expect the Cayman article files or lists (.cwl files).
CWL output directory	Edited / modified article lists are saved here.
Path for Excel order lists	(without meaning in this program version)
Language	The selection of the user language can be found here. So far English (EN) and German (DE) are supported. After changing the language, the program must be restarted
Enable user management	<b>Disabled</b> (unchecked): The user management is disabled. Each user has access to all program settings (this window). → This is the setting after program installation! <b>Enabled</b> (checked): The next time the "Global settings" menu is called up, a user name and password will be requested. If they are entered correctly, all settings can be edited, otherwise they can only be read (read only).

# 4 Setup settings of the tools

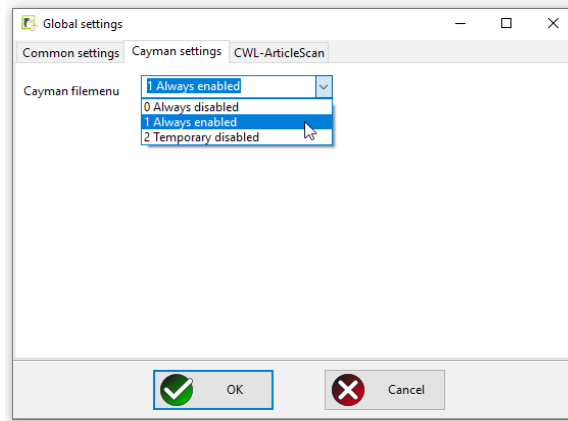


## Note!

Not all tools need all directories. Therefore, depending on the tool, unused options are grayed out and not selectable.

The selection of the user language can also be found here. So far English (EN) and German (DE) are available. After changing the language, the program must be restarted.

### 4.1.2 Cayman-settings

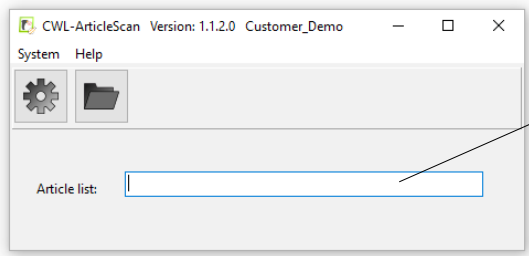


Selecting "Cayman filemenu" activates or deactivates the Cayman file menu. If the menu is activated, article lists can be loaded or saved directly from Cayman at any time, for example.

Function	Description
0 Always disabled	The file menu is always disabled (icons are grayed out).
1 Always enabled	The file menu is always enabled.
2 Temporary disabled	The file menu is disabled for the following tools, because manual loading and saving in these tools should be avoided:  CaymanToolboxBasic: <ul style="list-style-type: none"><li>• CWL-ArticleScan</li><li>• CWL-Harness</li></ul> CaymanToolboxERP <ul style="list-style-type: none"><li>• ERP2Cayman</li><li>• CWL-JobTool</li><li>• CWL-Import</li></ul>

## 5 CWL-ArticleScan

The tool enables the fast reading of articles / article lists into Cayman using a barcode scanner or keyboard. The recording of articles and raw materials is intelligently supported.



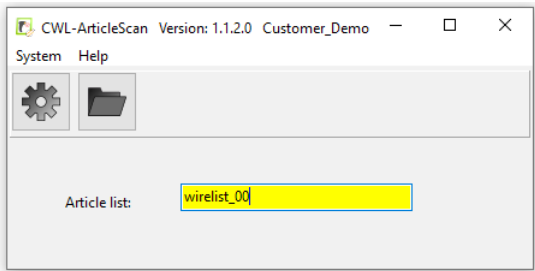
scanfield article list

### 5.1 Example article list scan

The Cayman file "wirelist\_001.cwl" exists in the CWL import directory. When scanning a barcode with the content "wirelist\_001" the input mask changes as follows:

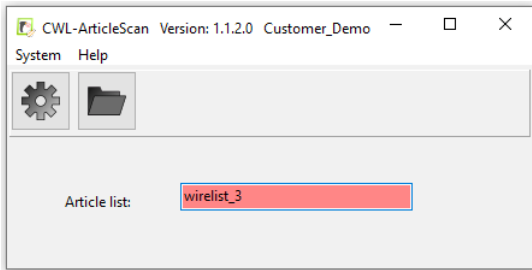
#### 5.1.1 Step 1: Scanning an article number

The entered string "wirelist\_00" can still be added to an existing file: It will be highlighted in yellow.



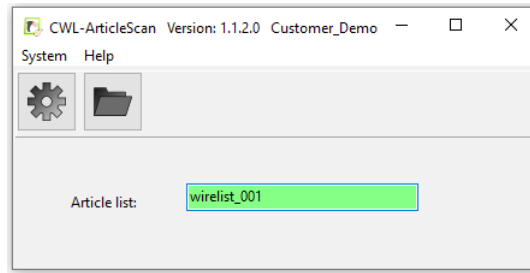
#### 5.1.2 Step 2: Troubleshooting if no Cayman file is available

If a barcode is scanned for which no file is available (in the example: "wirelist\_3"), the input field is highlighted in red. In this case, the operator can correct the input manually or delete the input field and scan the article number again.



#### 5.1.3 Step 3: Loading the article list

The string "wirelist\_001" corresponds exactly to the file name (assuming ".cwl" extension). It is now highlighted in green.



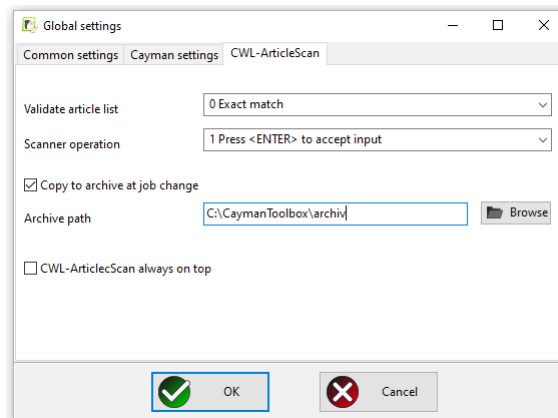
The selected list will now be automatically loaded into Cayman.

#### 5.1.4 Checking the raw material with "CWL-MaterialScan"

Parallel to "CWL-ArticleScan", the tool "CWL-MaterialScan" (see chapter 8) can be used. It allows the input / selection of raw materials via barcode scanner and offers a material check, which ensures that the correct raw material is always used for production.

#### 5.2 Specific settings for CWL-ArticleScan

These settings control how CWL-ArticleScan behaves when importing article lists or raw materials:



##### 5.2.1 Scanner operation

These settings control the behavior of CWL-ArticleScan when reading article lists:

Function	Description
<b>Validate article list</b>	<p>Name check when entering / scanning article lists:</p> <p><b>0 Exact match</b></p> <ul style="list-style-type: none"> <li>The input in the scan field must correspond exactly to an article list.</li> </ul> <p><b>1 Filename may be longer</b></p> <ul style="list-style-type: none"> <li>If an article list exists whose name begins with the scan input <b>and</b> the assignment is unique, it will be loaded.</li> </ul> <p><b>2 Filename may be shorter</b></p> <ul style="list-style-type: none"> <li>If an article name is part of the scan input <b>and</b> the assignment is unique, it will be loaded</li> </ul>
<b>Scanner operation</b>	<p>Options when entering / scanning article names or lists:</p> <p><b>0 Accept input directly</b></p> <ul style="list-style-type: none"> <li>If a 100% name match exists, this file is immediately loaded into Cayman (scanfield <b>green</b>). This setting should only be used if the scanner does not generate &lt;CR&gt; characters.</li> </ul> <p><b>1 Press &lt;Enter&gt; to accept input</b></p> <ul style="list-style-type: none"> <li>The loading of a file must be confirmed with &lt;Enter&gt;. This is the default</li> </ul>

Function	Description
	setting.
<b>Cop to archive at job change</b>	If this option is checked, the current Cayman job will be saved to the chosen archive path. The job name is extended by a timestamp (YYYYMMDD_hhmmss).
<b>Archive path</b>	The chosen archive path.
<b>CWL ArticleScan always on top</b>	If this option is selected, the main window of CWL-ArticleScan is always displayed in foreground and cannot be hidden by other program windows (e.g. Cayman).

### 5.3 Further explanations

#### 5.3.1 Technical explanations

- Scanning article lists
  - CWL-ArticleScan searches exclusively in the CWL import directory (s. ch. 4.1.1)
  - The scanned name must match the name of a Cayman CWL file, whereby the file extension ".cwl" is added automatically
- Upper and lower case
  - CWL-ArticleScan does not distinguish between upper and lower case letters in the interaction with Cayman
  - This behavior cannot be changed for technical reasons

#### 5.3.2 Color representation of the input fields during scanning

The color of the scan field changes during scanning, the colors have the following meaning:

Color	Description
Green	The entered string corresponds exactly to a file name.
Yellow	The entered string can be completed to one or more file names.
Red	No more match possible.

#### 5.3.3 Limitations

#### 5.3.4 FAQ typical errors / problems

Problem	Caused by / solution
The scanned barcode is "green", but the article list is not loaded	Probably the barcode scanner does not send <CR> characters. <ul style="list-style-type: none"> <li>• For testing please press the &lt;Enter&gt; key</li> <li>• The program can be configured to load the article list even without &lt;CR&gt; characters (see chapter 5.2.1)</li> </ul>
The job is never found	Probably a job number is printed on your papers, but the ArticleScan needs an article number <ul style="list-style-type: none"> <li>• Contact your IT department whether the order number can also be printed as a barcode on the order papers.</li> </ul>
Article list / cable is never found:	ArticleScan does not find a suitable file with the extension ".cwl". <ul style="list-style-type: none"> <li>• Check the setting of the CWL import directory ( see chapter 4.1.1 'Common settings').</li> <li>• Check with the Windows Explorer whether the correct files are present in the import directory</li> </ul>

# 6 CWL-Harness

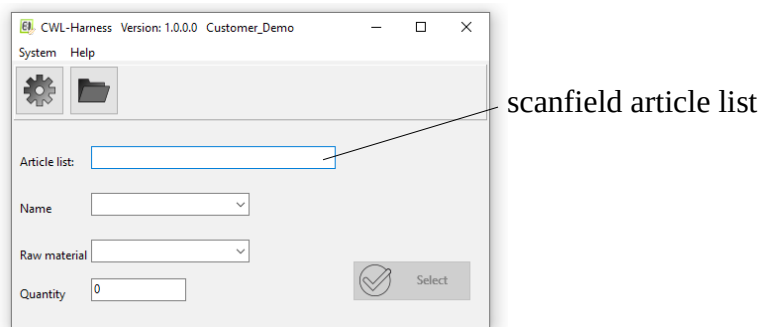
## 6 CWL-Harness

The tool reads in all article names and raw materials of all articles of a Cayman article list (.cwl file) and enables the targeted selection of articles with searched name and raw material.

### 6.1 Selection based on article name and raw material

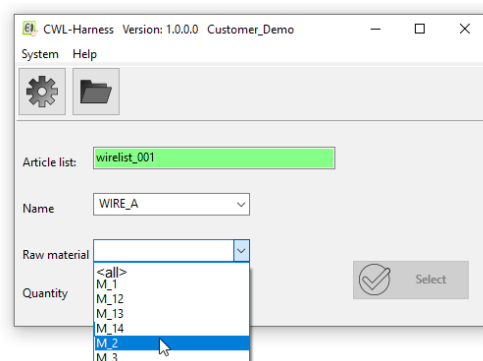
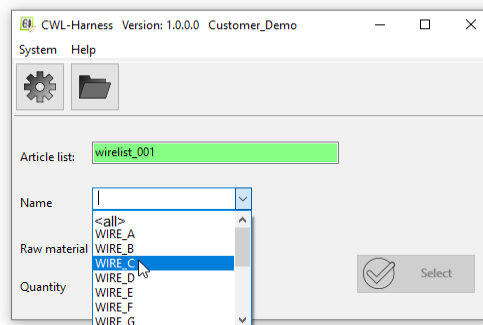
#### 6.1.1 Scanning an 'article number'

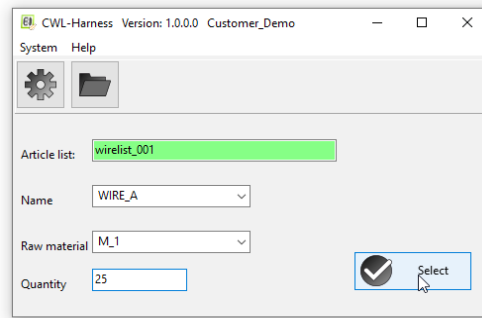
The main window shows a scan field for entering a Cayman article list, the CWL import directory (s. ch. 4.1.1) is preset as the search path. The input is highlighted (red, yellow, green) depending on whether a matching list is available in the import directory.



#### 6.1.2 Selection of article names and raw material:

The found article names and raw materials are listed alphabetically in two selection boxes (Name, Raw material). With the selection <all> all articles or raw materials are selected.





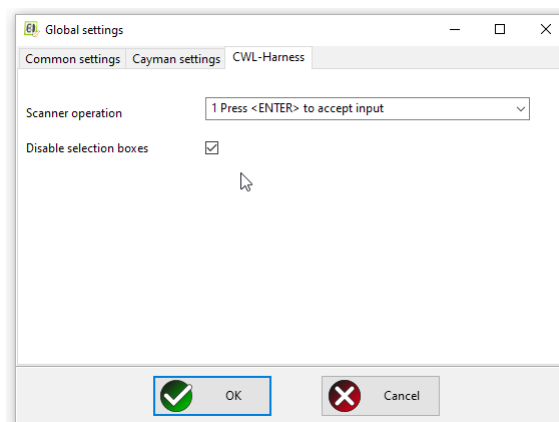
**6.1.3 Entering the number of pieces to be produced:**

After selecting a combination of name and raw material, the number of pieces to be produced can be entered.

In Cayman a new list with the suitable articles with the desired quantity is created. The new list can be produced directly or saved from within Cayman under a new name: For this the option "Cayman file menu active" (see chapter 4.1.2 "Cayman settings") must be activated.

**6.2 Specific settings for CWL-Harness**

These settings control the behavior of CWL-Harness when reading article lists and selecting articles.



Function	Description
Scanner operation	The settings of the barcode scanner ('Scanner operation') are done analog to CWL-ArticleScan, see Chap. 5.2.1
Disable selection boxes	If this option is selected, the selection of 'Name' and 'Raw material' via the corresponding selection boxes is disabled. Name and raw material must be entered into the corresponding fields via keyboard or scanner. This serves as an additional protection against incorrect selection.

For the selection of the import directory see chapter 4.1.1 ("Common settings").

**6.3 Further explanations**

**6.3.1 Technical explanations**

- Scanning article lists
  - CWL-Harness searches exclusively in the CWL import directory (s. ch. 4.1.1)

# 6

## CWL-Harness

---

- The scanned name must match the name of a Cayman CWL file, whereby the file extension ".cwl" is added automatically
- Upper and lower case
  - CWL-Harness does not distinguish between upper and lower case letters in the interaction with Cayman
  - This behavior cannot be changed for technical reasons

### 6.3.2 Color representation of the input fields during scanning

The color of the scan field changes during scanning, the colors have the following meaning:

Color	Description
Green	The entered string corresponds exactly to a file name.
Yellow	The entered string can be completed to one or more file names.
Red	No more match possible.

### 6.3.3 Limitations

- Currently only a total quantity can be entered, not a batch quantity

### 6.3.4 FAQ typical errors / problems

Problem	Caused by / solution
Article lists are not found	See under "CWL-ArticleScan" chapter 5.3.4



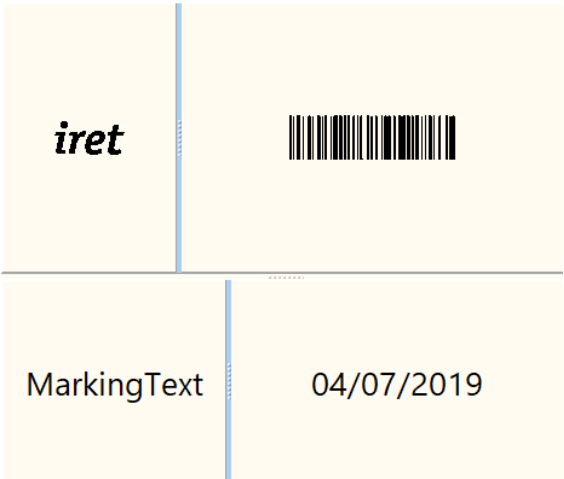
## 7 CWL-MarkinEditor

MarkinEditor is a tool for CAYMAN for graphical editing of print texts from "Thermal Transfer / Laser"areas. The print texts can comprise several lines / columns and can be composed of any combination of text, logos (graphics), barcode and variable elements such as time, date, counters.

### 7.1 Overview

The MarkinEditor can be started directly from CAYMAN, all text areas of a selected cable are loaded and displayed in a print preview. Here the contents can be edited graphically, rows / columns can be inserted or deleted. The result is directly visible on the screen. After the changes have been completed, the marking text is played back to CAYMAN. All necessary formatting instructions are automatically generated and inserted.

Example for a marking text consisting of 2 rows and 2 columns with logo, barcode (variable field: counter), text, text (variable field: date):



The MarkinEditor automatically generates the following string with integrated Cayman formatting instructions. The user is freed from the often error-prone input of formatting instructions.

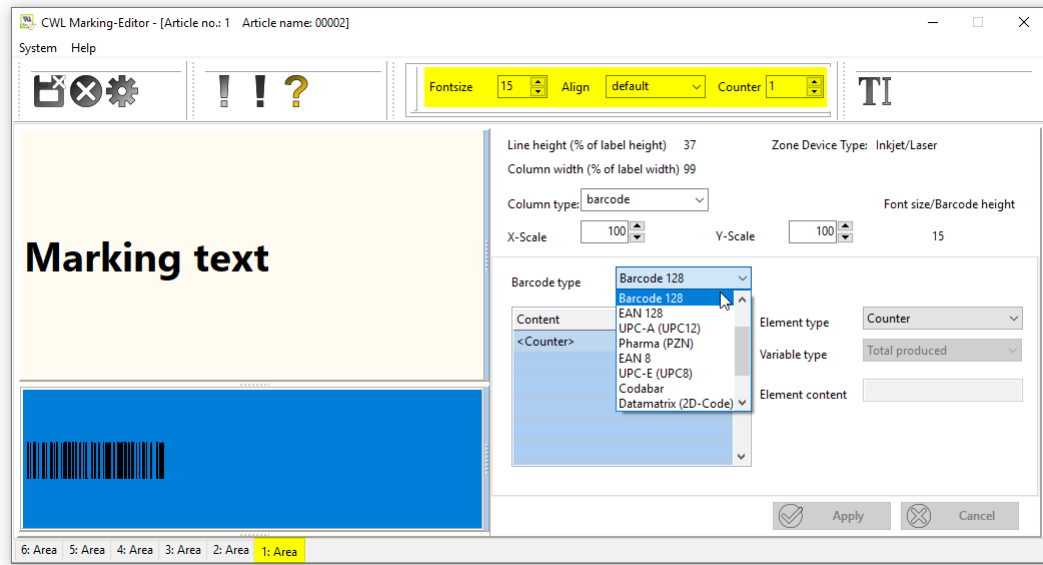
```
\#C\&n50\&\&L39;61\&\&S130;130\&\&Firt_logo1\&\&S102;100\&\&4@5\&\&n50\&\&L39;61\&MarkingText\&\&S120;120\&\&@2
```

### 7.2 Edit marking texts

#### 7.2.1 Loading, displaying and editing text areas

Each area (5 in this example) can be loaded into the preview / editing window by clicking with the mouse on the corresponding area in the MarkinEditor.

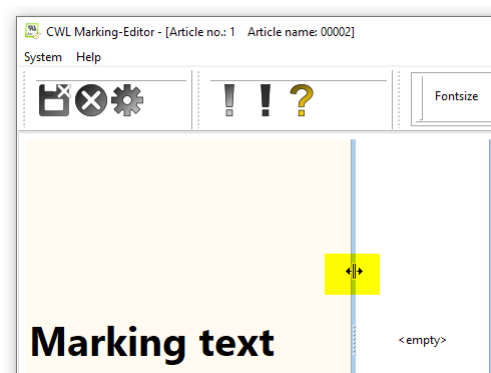
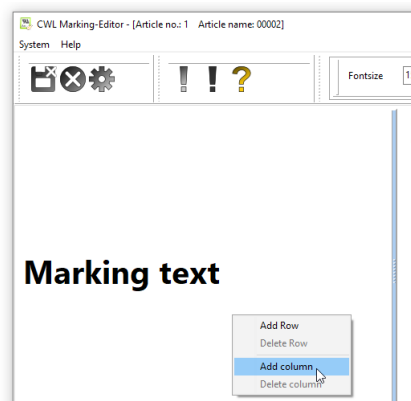
For each area there are basic settings for text size (Fontsize) and alignment (Align) as well as a start value for a counter (Counter).



The marking text of an area can consist of several rows / columns, which in turn can consist of several rows / columns. With a mouse click on one of these fields, its contents can be edited, the field is highlighted in blue.

### 7.2.2 Adding rows / columns

In the selected field new rows / columns can be added by clicking the right mouse button:



Row heights and column widths can be altered at any time: To do this, place the mouse on the hyphen between two fields and move it up/down or left/right while holding down the left mouse button.

7.2.3 Selection of Column type



A marked field can be assigned a column type, available are the types "empty", "text", "logo" and "barcode".

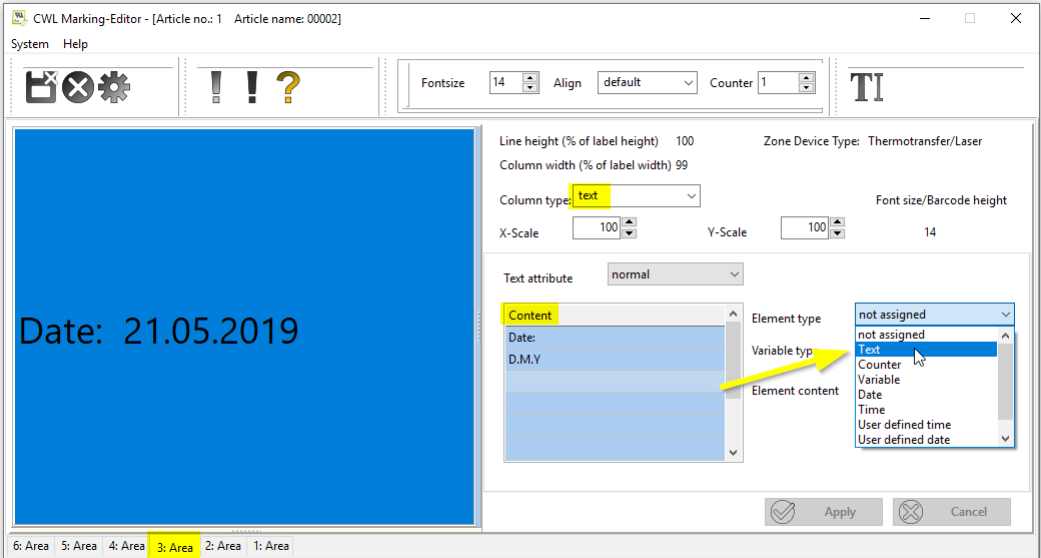
Within a field, several similar column types can be arranged next to each other, e.g:

- a text (as text) + a date (as text) + a counter (as text) or
- a text as barcode+ a date (as barcode) + a counter (as barcode).

(Note: This does not apply to the type "Logo", here only one logo per field is possible.)

7.2.4 Assembling a field from elements:

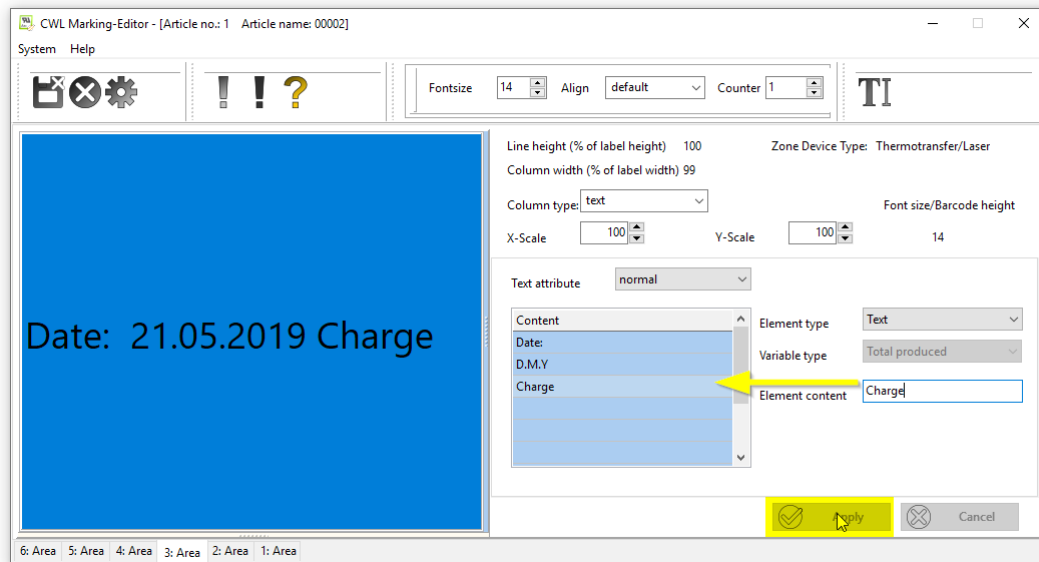
For a field of the type "Text" or "Barcode", several element types can be arranged together:



Example:

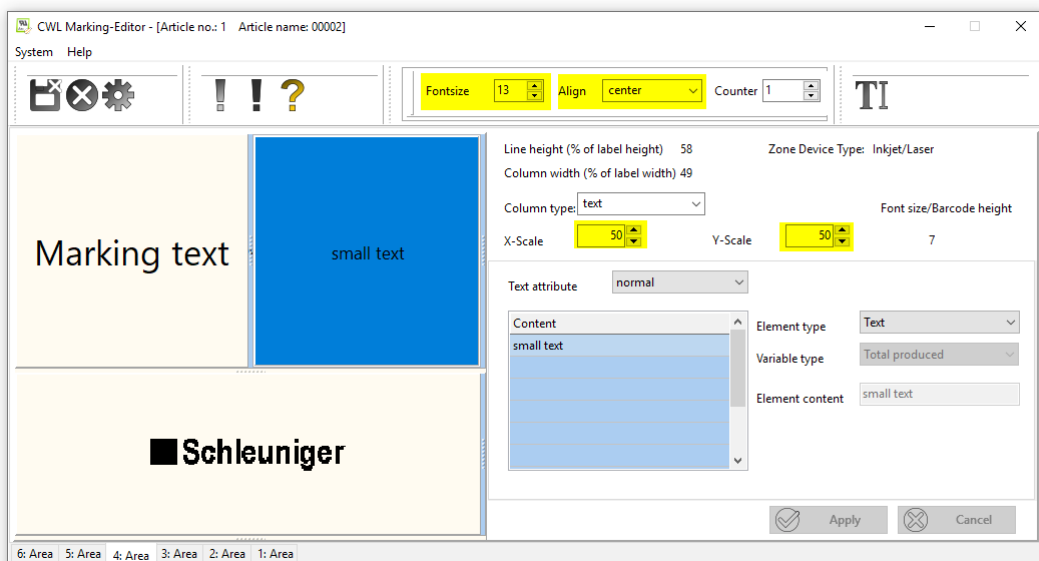
The 3rd area has only one field of the column type "text". The table "Content" has already two elements: A Text "Date: " (with 2 spaces at the end) and a User defined date („D.M.Y“ = Day.Month.Year).

Now the 3rd row of the table "Content" is marked by mouse click and another element of the type *Text* is appended. Now enter the desired text in the "Element content" input field, here "Charge" (note the preceding spaces so that the new text is optically separated from the date). A mouse click on the "Apply" button adds the entry to the table and shows the updated preview.



### 7.2.5 Resizing the print fields

In addition to the basic setting "font size", the sizes of texts, barcodes and logos can be set individually for each field on a percentage basis: The text "small text" has only half the size (50%) related to the basic setting (font size 13).



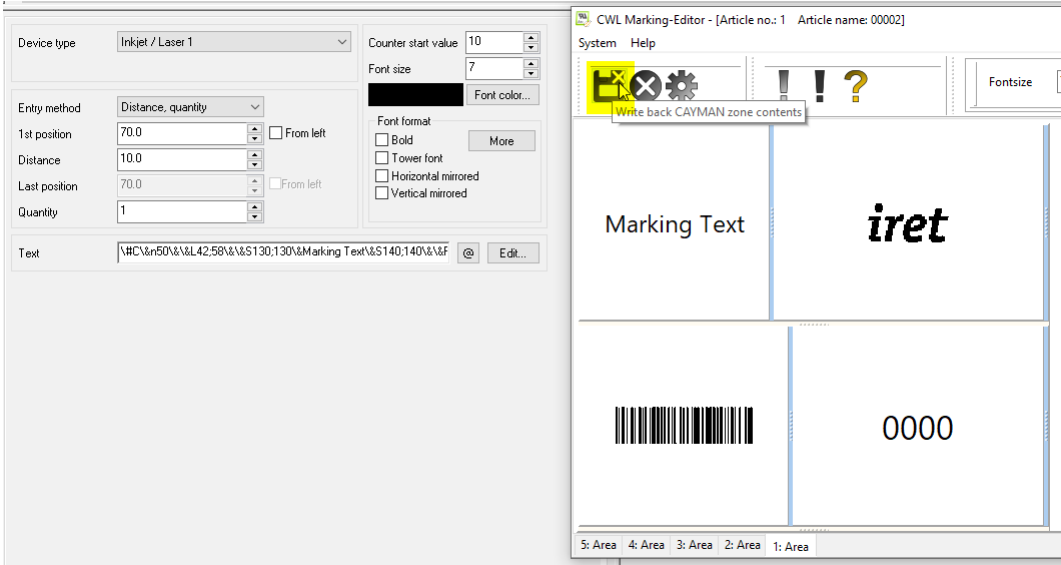
#### Note:

The preview of the "Text" and "Logo" fields shows the selected print contents. A barcode symbol image is displayed in the "Barcode" fields.



7.3 Transfer data back to Cayman

After the area changes have been completed, the marking texts should be transferred back to CAYMAN. To do this, press the button with the save (diskette) symbol.



Note:

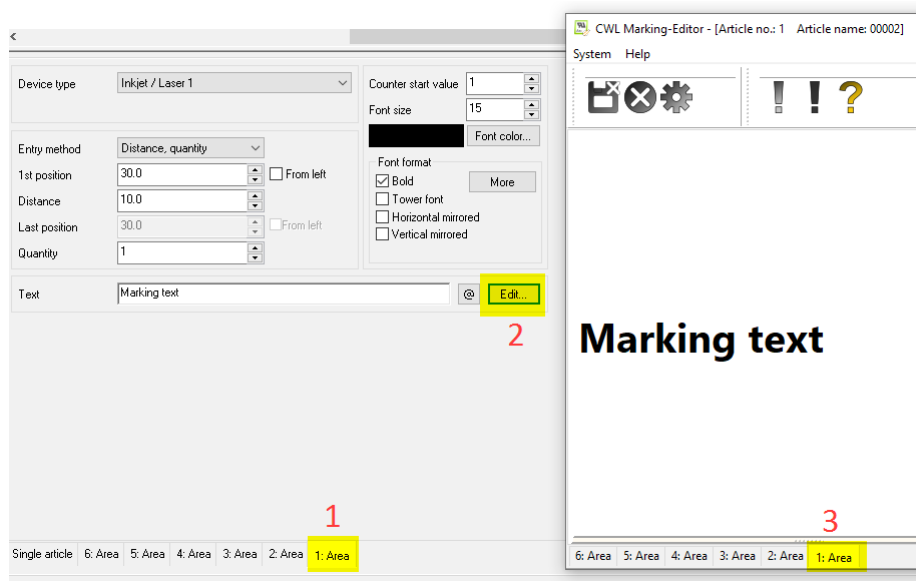
The MarkingsEditor itself does not save marking texts! If changes are to be saved, this must be done in the Cayman menu "Save" or "Save as".

After finishing the transfer the MarkingsEditor is automatically closed so that no unintentional text changes occur. Clicking the "Edit" button restarts the MarkingsEditor and reloads all areas.

7.4 Further explanations

7.4.1 Technical explanations - Integration of the MarkingsEditor in Cayman

The MarkingsEditor is started from CAYMAN by clicking the "Edit"-button. First select in Cayman the cable to be edited, it must contain at least one area. Now click on any area (here 1. Area), then on the "Edit" button (2). The marking texts of all areas (in this example 5) are loaded into the MarkingsEditor and can be selected (3).



### 7.4.2 Limits General

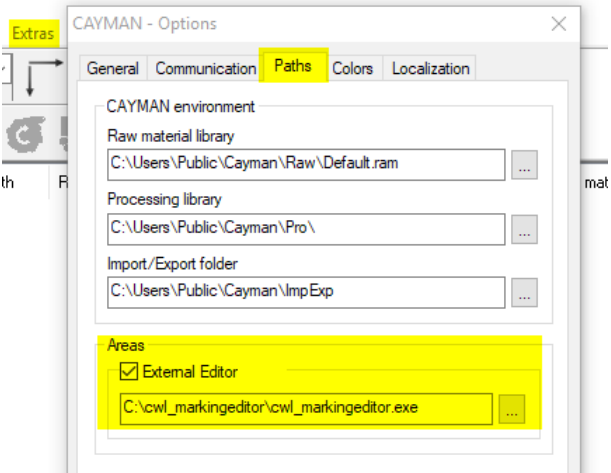
- CWL MarkingEditor does not check if the created marking text can be implemented by the marking device
- CWL-MarkinEditor does not check if the text can be processed by Cayman
- No support for "Inkjet / Laser" areas at the moment

#### Number of rows and columns

- Basically the number of rows and columns is not limited, but the program has been tested only up to 4 rows with 4 columns each
- Basically, new columns can only be created within a row, but not new rows within a column

### 7.4.3 FAQ typical errors / problems

Problem	Cause by / solution
Total height of all rows is 99% but should be 100%	This is a known problem but has no effect on the marking
Total width of all columns is 99% but should be 100%	This is a known problem but has no effect on the marking
Inserting a new text element does not work, the column remains "empty"	Please click into one the rows in grid "content" before applying the changes.
An area is not displayed in the MarkingEditor	Probably the text contains characters that cannot be interpreted by the MarkingEditor. <ul style="list-style-type: none"> <li>• Press the red exclamation mark in the toolbar to view the error message</li> <li>• Remove the unknown control characters in Cayman</li> </ul>
MarkingEditor cannot be started from Cayman	Probably the path to the MarkingEditor in Cayman is not configured correctly. Solution: Under "Extras" / "Options" / "Paths" / "Areas" a check mark must be set in front of "External Editor", the installation path of the MarkingEditor is selected in the field below. If the displayed settings are not correct, Cayman must be started once in Administrator mode to correct the settings.

Problem	Cause by / solution
	
The button "Rotate Text 180°" is identical for all text elements	This is a limitation of Cayman

# 8

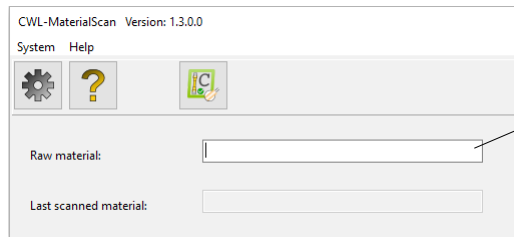
## CWL-MaterialScan

# 8

## CWL-MaterialScan

### 8.1 Usage

The tool checks whether the raw material scanned and placed in the machine matches the raw material data of the Cayman articles. If they do not match, a warning is displayed and production is interrupted.



scanfield  
raw material

The name of the material that was last loaded into the machine must be entered in the "Raw material" field. An input via barcode scanner is possible. CWL-MaterialScan remembers the input until a new material is scanned.

The name of the material that was last loaded into the machine must be entered in the "Raw material" field. An input via barcode scanner is possible. Below that CWL-MaterialScan shows the last scanned material until a new one is scanned in. If CWL-MaterialScan detects that the wrong material is to be used for production, a warning message appears with the required raw material. At the same time, production is prevented from starting. CWL-MaterialScan can only work if there is a connection to Cayman. The status of the connection is indicated by an icon in the taskbar:

Icon	Description
	Cayman is connected, material check active
	Cayman is <b>not</b> connected

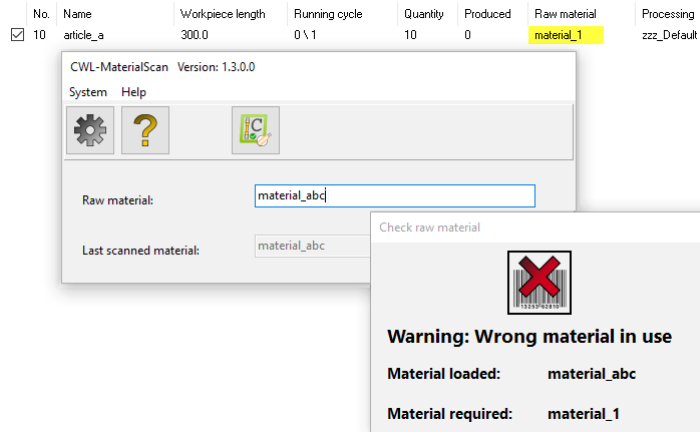
#### 8.1.1 Example

Loaded material: "material\_abc", required material (Cayman): "material 1".

=> "Warning: Wrong material in use". The production cannot be started.

After scanning the correct raw material or selecting a Cayman article with matching raw material, the warning disappears and production can be started.





**Notes:**

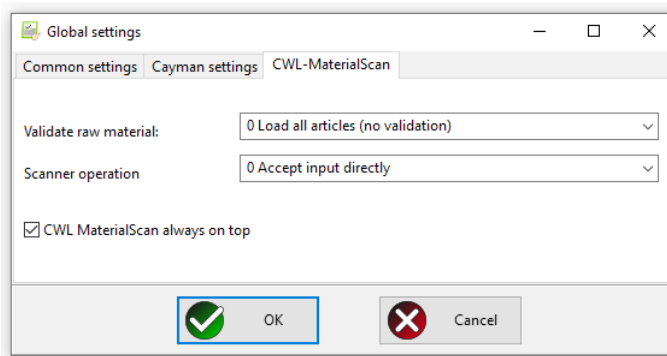
A material scan is only possible when production is stopped or not yet started, while production is running the input field is inactive.

When checking the raw material, no distinction is made between upper and lower case (A-Z, a-z). The input "mat\_123" is therefore identical with "MAT\_123" or also "Mat\_123".

**8.2 Specific settings fro CWL-MaterialScan**

These settings control how CWL-MaterialScan behaves when checking raw materials.

Note: The settings menu can only be accessed when production is stopped or not yet started.



Function	Description
Validate raw material	<p><b>0 Load all articles (no Validation):</b></p> <ul style="list-style-type: none"> <li>There is no raw material check, production starts in any case.</li> </ul> <p><b>1 Load all articles with matching raw material name:</b></p> <ul style="list-style-type: none"> <li>Scanned raw material and material of the Cayman article must match exactly, otherwise production stops!</li> </ul> <p><b>2 Scanned material may be longer than Cayman material</b></p> <ul style="list-style-type: none"> <li>The entered raw material name may have additions: If Cayman e.g. demands raw material "Mat_ABC", the production starts even if e.g. raw material "Mat_ABC_charge XYZ" was scanned.</li> </ul> <p><b>3 Cayman material may be longer:</b></p> <ul style="list-style-type: none"> <li>Here the behavior is exactly the opposite: The Cayman material may have additions.</li> </ul>
Scanner operation	<b>0 Accept input directly</b>

## 8

## CWL-MaterialScan

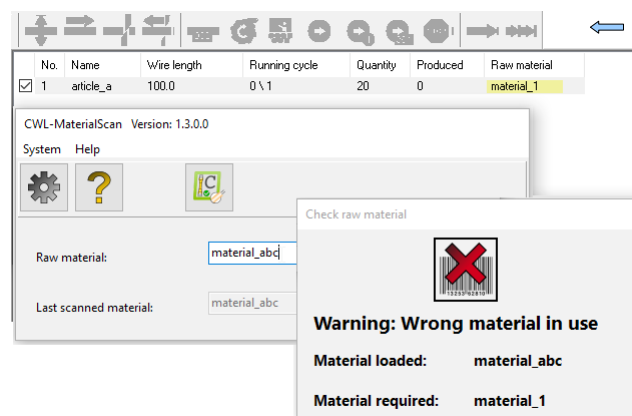
Function	Description
	<ul style="list-style-type: none"> <li>This setting should only be used if the scanner does not generate a &lt;CR&gt; output.</li> </ul> <p><b>1 Press &lt;ENTER&gt; to accept input</b></p> <ul style="list-style-type: none"> <li>The input must be finished pressing the &lt;enter&gt; key. This is the default setting.</li> </ul>
<b>CWL-MaterialScan always on top</b>	If this option is selected, the main window of CWL-MaterialScan is always on top and cannot be hidden by other program windows (e.g. Cayman).

## 8.3 Further explanations

## 8.3.1 Behavior of different Cayman versions:

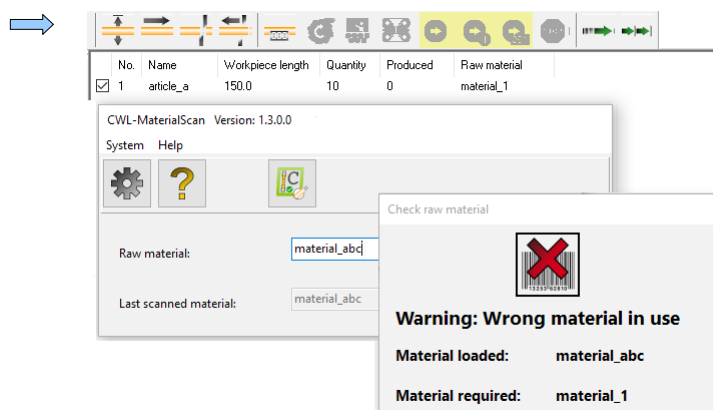
**Cayman up to and including version 13:**

In case of wrong raw material all Cayman machine symbols are deactivated (greyed out), production start is not possible. To activate the functions "Material load / unload" etc., a Cayman article must be selected in the meantime and a suitable raw material must be entered.

**Cayman from version 14:**

In case of wrong raw material only the symbols "Start", "Single piece" and "Sample" are greyed out, loading/unloading etc. of any raw material is possible at any time.

Material load / unload etc. possible



## 9 CWL-Tools

The tool allows extensive editing / manipulation of both individual Cayman cable lists (.cwl files) and collections of lists within Windows directory structures (folders). This allows you to make simultaneous changes to a large number of articles and article lists without having to load and edit them individually in Cayman, which is prone to errors.



### Note!

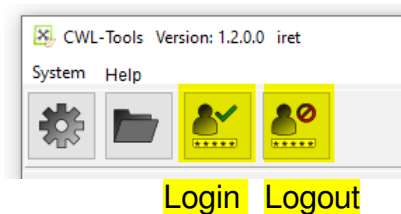
We strongly recommend to make backup copies of all your Cayman files before starting to work with CWL-Tools.

### 9.1 Restricted user rights

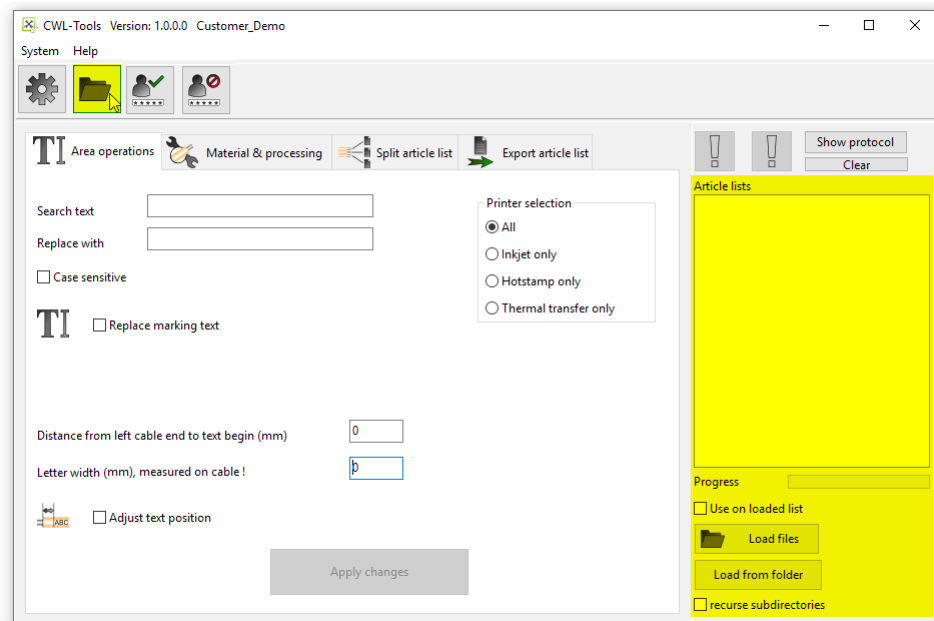
After changes have been made to Cayman lists with CWL-Tools, e.g. in work preparation, functions can be locked for production. This is controlled by the setting "Enable user management (s. ch. 4.1.1).

If the user management is enabled, all functions that make changes to stored Cayman files are blocked (input fields etc. grayed out). Only changes to the list currently loaded in Cayman are now allowed.

To unlock all the functions again, press the "Login" button and enter the programmer password for work preparations. To lock the functions again, press the "Logout" button.



### 9.2 Loading individual article lists or list collections



On the right side of the main window, you will find the controls for loading Cayman article lists (.cwl files). The following operations can be performed either to the wires already loaded in Cayman, or any article lists (files) can be selected for editing.

Function	Description
Use on loaded list	The following operations refer only to the wires already loaded in Cayman. Further articles / cables cannot be selected. <b>Note:</b> With limited user rights this option is always selected, the following loading options are disabled.
Load files (This button exists a second time to the right of the "Settings" icon).	A dialog for the selection of .cwl files opens, multiple selection of files is possible. The selected files are displayed in the "Article lists" window. The following operations now only apply to the files in this list. <b>Attention:</b> Articles / cables loaded in Cayman will be deleted during the following operations.
Load from folder	With this function you can load all cwl-files of a folder into the article list.
recurse subdirectories	If this option is selected, all cwl files of all subfolders of the selected folder will also be loaded.

Processing large lists can take some time, so a progress bar indicates the progress of processing.



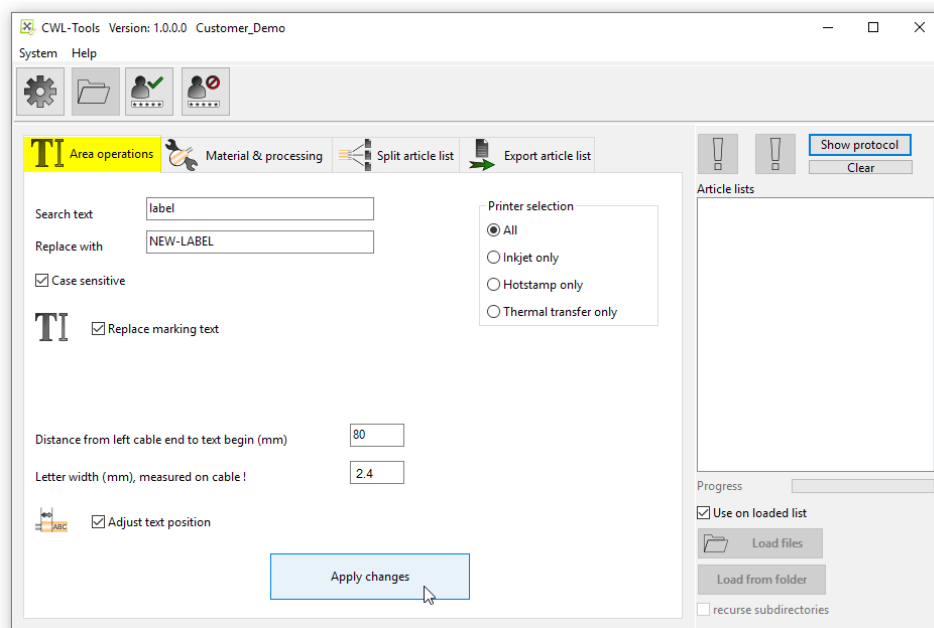
### Warning!

In the following operations all wires loaded in Cayman are changed or deleted. If a cable list currently available in Cayman is to be saved, this must be done **before** the following operations are carried out.

#### 9.2.1

### Area operations

Under this item, you can change marking texts in Cayman text areas. Text can also be positioned at an exact distance from the left cable end.



### Replace marking text

The checkbox "Replace marking text" activates text replacement:

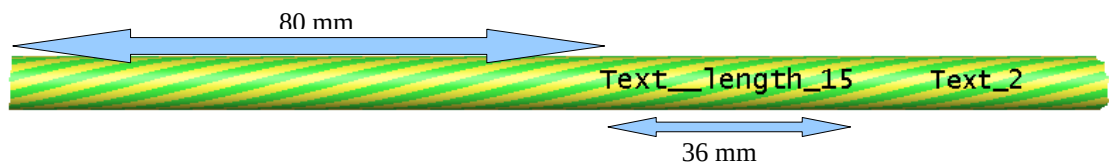
The text in the "Search text" field is replaced by the text in the "Replace with" field. This is case-sensitive or case-insensitive, depending on whether the corresponding checkbox has been activated.

### Adjust text position

The checkbox "Adjust text position" activates the text positioning:

This makes it possible to position a marking text on the cable at a defined distance from the left end of the cable (i.e. the distance from the end of the cable at the beginning of the text). This positioning only refers to the marking text that is closest to the cable end.

Two numerical values are required for this: One is the desired distance from the end of the cable (cut) at the beginning of the text, the other is the actual width of a character or letter, measured on the printed cable.



Example: A marking text should start 80 mm from the end of the cable: Enter **80** in the "Distance from left cable end to text begin" field.

The text, for example, has a length of 15 characters, on the cable a total width of 36 mm is measured. Then each character has a width of  $36:15 = 2.4$  mm. In the field "Letter width (mm)" the value "2.4" must be entered. The positions of marking texts further to the right, in this case "Text\_2", are not changed.

**Note:** The "Adjust text position" function is also available with restricted user rights. However, it then only works on the list currently loaded in Cayman.

### Printer selection

Text replacement can be activated for different printer types or combinations, this is controlled by the options in the "Printer selection" box. Text positioning, on the other hand, is only available for inkjet / laser printers.

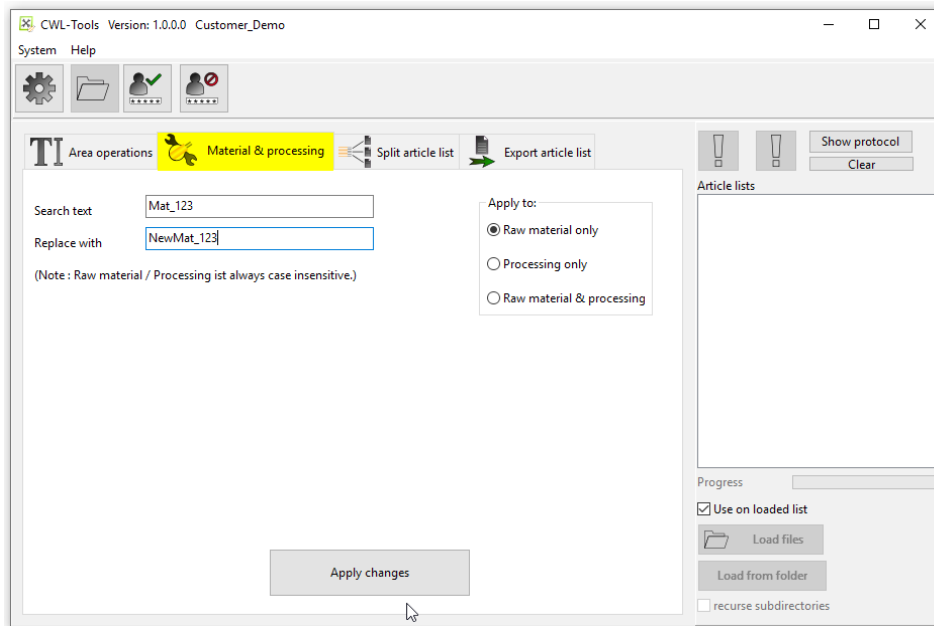
### Apply changes

After pressing the "Apply changes" button, the selected text changes (Replace and/or Position) are carried out. If both options are selected, the text replacement is carried out first, followed by the positioning of the changed texts, if necessary.

Saving the changed articles or article lists is controlled by the settings in the tool-specific setup.

## 9.2.2 Material and processing

Under this item the raw materials and/or processes of all articles of all loaded lists can be changed.



Example:

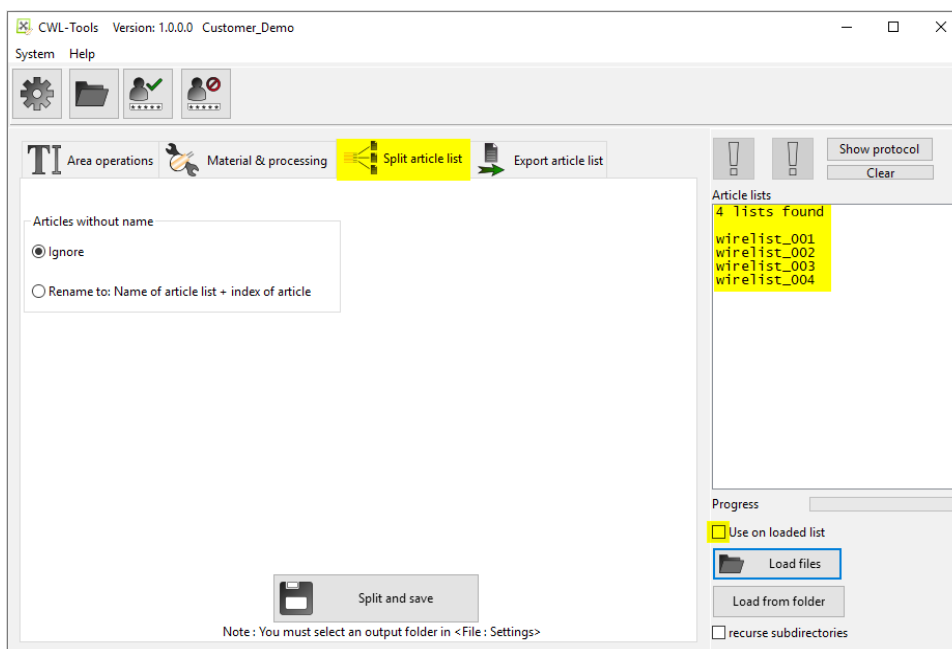
Enter "Search text" "Mat\_123" and "Replace with" "NewMat\_123":

All articles of all loaded lists will be changed.

#### Apply to:

The field "Apply to" controls whether the action should be applied to raw material, processing or both.

### 9.2.3 Split article list(s)



Under this item all articles of all loaded lists can be split (isolated). The new article lists then each have exactly one article. This is helpful to import single articles into Cayman and to create new lists.

The splitted lists will be stored in the CWL output directory (see chapter 4.1.1), for this the option "Save to output directory"(chapter 9.3.1) must be selected in the tool specific setup.

The names of the new lists correspond to the article names in the original lists. If an article was nameless, it will be treated according to the setting in the "Article without names" field.

Function	Description
Ignore	This article will be ignored.
Rename to: Name of article list + index of article	The output file is named: origin list name + cayman article index (+.cwl)



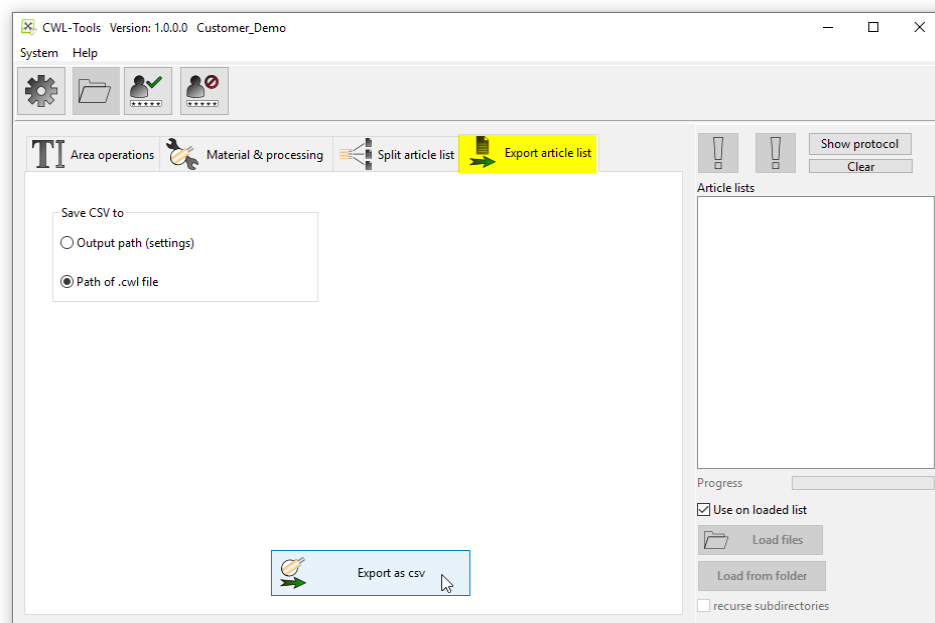
**Note:**

The function "split article list(s)" can only be used on loaded lists added to the "Article list" window. It can not be used on a list already loaded in Cayman.

**9.2.4**

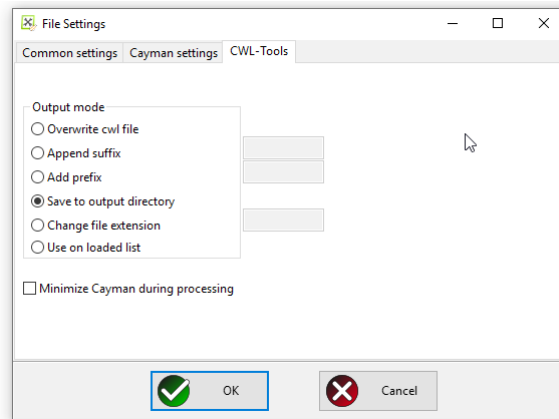
**Export article list**

This point allows the export of article data in tabular form (CSV = Comma-separated values: The entries of the table columns are separated by a comma). The storage location of the table can be selected:



Function	Description
Output path (settings)	The table is stored in the directory specified in the setup.
Path of .cwl file	The table is stored in the directory of the cwl file.

### 9.3 Tool-specific settings



Here you define how articles or lists are treated after processing:

#### 9.3.1 Output mode:

Function	Description
Overwrite cwl file	The original files are overwritten.
Append suffix	With the suffix "_new", for example, "List1.cwl" becomes "List1_new.cwl".
Add prefix	With prefix "New_", for example, "List1.cwl" becomes "New_List1.cwl".
Save to output directory	All articles / lists are stored in the cwl output directory (see General Setup).
Change file extension	With file extension "new", for example, "List1.cwl" becomes "List1.new".
Use on loaded list	The changes are only made to the list currently loaded in Cayman and are not saved.

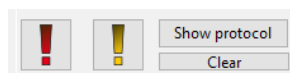
#### 9.3.2 Minimize Cayman during processing

The processing of extensive lists (several hundred articles) can take some time. It can be shortened by minimizing Cayman during processing. To do this, activate the corresponding checkbox. When the processing is finished, the Cayman window opens again to the original size.

### 9.4 Further explanations

#### 9.4.1 Technical explanations

In the right part of the main window there are 4 indicators that inform about the progress of the list processing.



Indicator	Description
Error (red), Warning (yellow)	Errors / warnings occurred during the processing of the lists. After the processing is finished, a log of all performed steps is displayed.
Show protocol	Clicking this button shows the log window with all the processing steps performed.



---

Indicator	Description
Clear	Deletes all protocol entries.

#### 9.4.2 Limits

#### 9.4.3 FAQ typical errors / problems