

Brief instructions



ERP – Cayman

Version 1.3.0

Date 01/31/2022

© 01/2022 DE
iret GmbH
Paul Engelhard Weg 50a
D-48167 Münster

Tel. +49 .251 .61 51 38
Fax +49.251 .61 76 31
E-Mail info@iret.de
Internet www.iret.de

iret

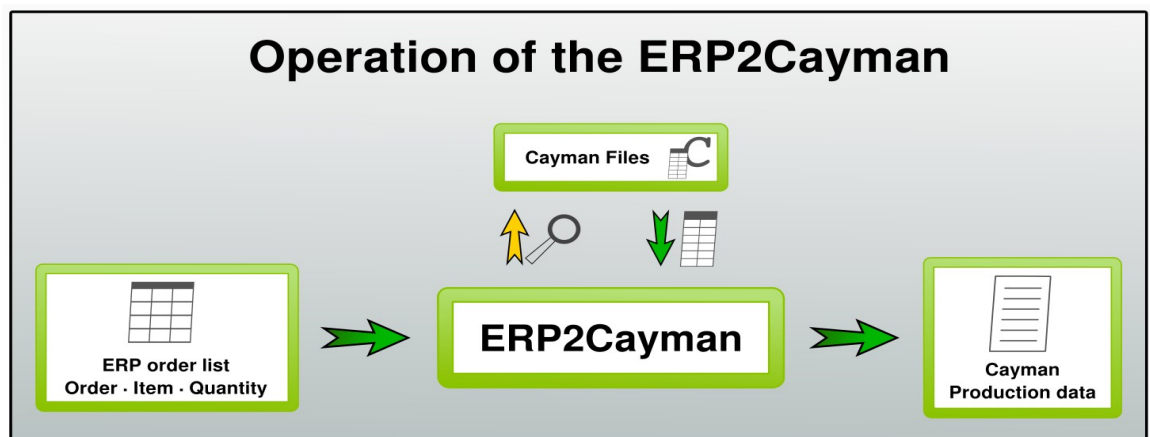
*Gesellschaft zur Entwicklung
elektronischer Steuerungen mbH*

1	General introduction.....	5
2	Installation and startup.....	6
2.1	Requirements.....	6
2.2	Installation.....	6
2.3	Licensing.....	6
2.4	Creating a station and station settings.....	6
3	Main window:.....	7
4	Operation.....	9
4.1	Selection of an Excel file.....	9
4.2	Preview & creation of the Cayman file.....	9
4.3	Resulting Cayman file.....	10
4.4	Import of marking texts.....	10

1 General introduction

This version of the erp2cayman software is intended as an example of a simple connection of the Cayman software to an ERP system. The software essentially performs the following steps:

- Article, order number and quantity are determined from a simple Excel list
- A Cayman file is searched for every single article
- A new Cayman file is created containing all items with the desired quantity and a reference to the order.
- Optional: inkjet markings are supplemented with order number + calendar week



- **Target group**

Companies in which a large number of different individual cables are assembled in variable quantities.

- **Advantages of ERP2Cayman**

- Waste avoidance: Orders with identical raw material can be manufactured en bloc
- Setup time optimization
- Articles can be created as usual with Cayman
- The ERP system only has to create a list with article number + quantity
- Cable identification contains order number and production week

- **Possible extensions**

- Sorting / splitting of production based on raw material
- Extension of the ERP file with order-dependent
 - - Labeling texts
 - - Cable lengths
 - - Comments
- Customer-specific arrangement of marking texts on the cable
- Distribution of jobs to different machines

2 Installation and startup

2 Installation and startup

2.1 Requirements

The software is currently available as a 32bit application and has the following dependencies:

- Windows XP - Windows 10
- **Cayman 13** must be present on the PC
- A running "**Cayman-Admin**" application must be terminated

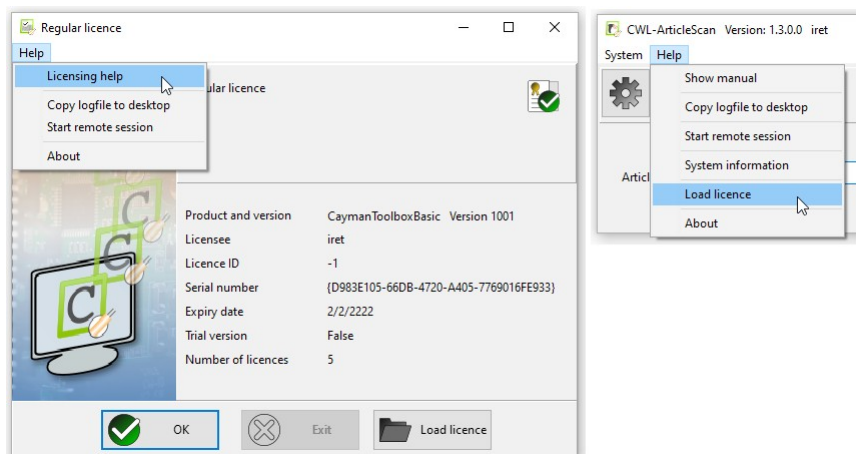
2.2 Installation

The setup installs all components of the software collection. As installation location it is recommended to use a directory in the root directory of c:, e.g. c:\CaymanToolboxERP\. The installation directory can be created during the installation.

2.3 Licensing

The licensing of the CaymanToolbox software is described in a separate document. You can display this document in the license dialog (menu 'Help', menu item 'Licensing help').

The license dialog is displayed in the demo version of the Toolbox at program start. You can also reach it via the program main menu 'Help', menu item 'Load licence'.



2.4 Creating a station and station settings

When the program is started for the first time, a new station is created; the station name corresponds to the name of your PC. Settings such as the user language are saved under this name.

Press 'OK' to create a new station.

Under the tab 'Common settings' you will find the input directories for Excel or Cayman (CWL) files, they should point to the displayed subdirectories of their destination folder (here: 'c:\erp2cayman\data\...').

In the folder CWL output directory the generated Cayman job files are stored.

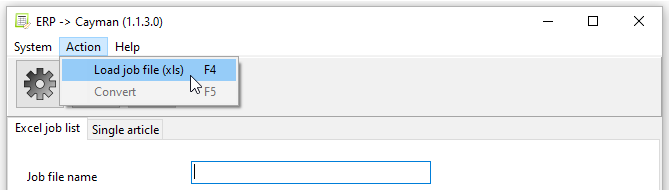
Note: Further explanations about the 'Common settings' can be found in the manual of the 'CaymanToolboxBasic', which was installed in the folder ""\doc\".

3 Main window:

When the program starts, the main menu is displayed with the items "System", "Action" and "Help, below them the icons "Settings (gear), "Load file", "Convert file".



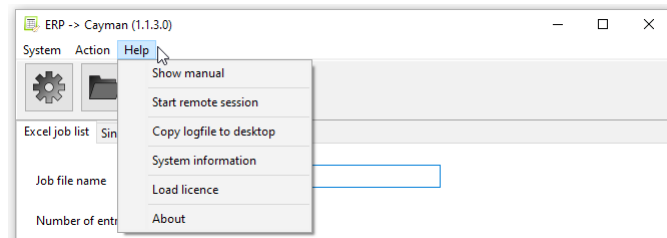
Function	Description
System: Settings	Opens the settings dialog. Note: You can also access the settings dialog by pressing the gear icon.
System: Exit	Terminates the program.



3

Main window:

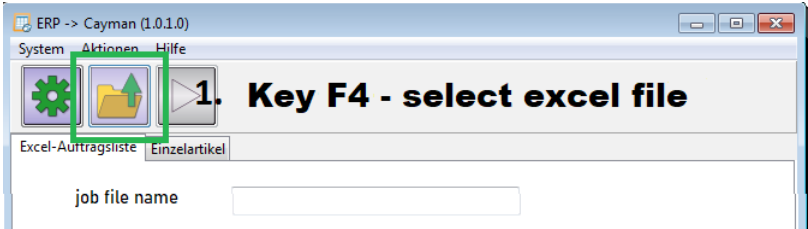
Function	Description
Load job file (xls) F4	Loads an Excel file. Note: A job list can also be loaded by pressing the "File" icon or by typing a file name into the 'Job file name' input field or using a barcode scanner.
Convert F5	These functions are described in more detail in Chapter 3. Note: Pressing the "Convert" icon will also start the file conversion.



Function	Description
Help : Show manual	Shows this document.
Help: Start remote session	Starts the remote maintenance (Anydesk).
Help: Copy logfile to desktop	To support the error analysis the logfile can be copied to the desktop. The log file is easy to find and can be sent as an attachment to an email, for example.
Help: System information	Shows information (e.g. paths) to required system files.
Help: Load licence	Opens the dialog window for loading a new licence.
Help: About	Shows program and licence information.

4 Operation

4.1 Selection of an Excel file



Press the F4 key or click the 'File' icon with the mouse to import an Excel file. Alternatively, you can enter the file name in the 'Job file name' field. Another option is to scan a barcode. In any case, the file will be searched for in the import directory for Excel files (see Settings menu, Chap. 2.4).



importXLS1



Note!

Currently, the Excel files must have exactly the following structure:
 Column A: part number, Column B: job name, Column C: Quantity. Column names must be in row 1 and are arbitrary. Production entries must start at row 2 and must not have empty rows.

	A	B	C	D
1	Teilenummer	Auftrag	Auftragsmenge	
2	Iret_0001	Order-1234	25,000	
3	Iret_9999	Order-Test	1,000	
4	Iret_0002	Order-0815	50,000	
5	Iret_0002	Order-0666	10,000	
6	Iret_0002	Order-1111	200,000	
7				
8				
9				

4.2 Preview & creation of the Cayman file

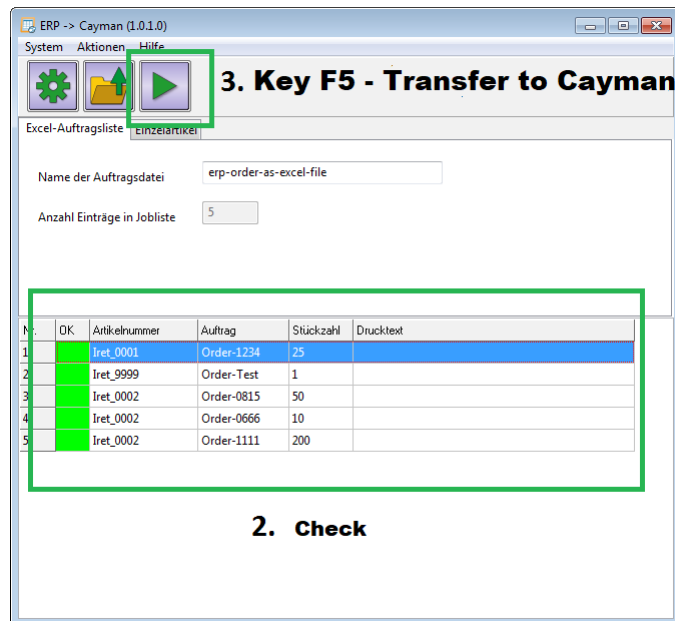
The following image shows the main window after opening an Excel job list. For each entry it was checked if a corresponding Cayman file exists:

- yes: entry is displayed in green
- no: entry is displayed in red



Note!

Currently all Cayman files must exist, otherwise no Cayman order file will be created!



4.3 Resulting Cayman file

Nr.	Name	Kabellänge	Lau...	Anzahl	Produziert	Losgr.
<input checked="" type="checkbox"/> 1	Order-Test: Iret Article 9999	999.0	0 \ 1	1	0	-
<input checked="" type="checkbox"/> 2	Order-1234: Iret Article 0001	500.0	0 \ 1	25	0	-
<input checked="" type="checkbox"/> 3	Order-1111: Iret Article 0002	600.0	0 \ 1	200	0	-
<input checked="" type="checkbox"/> 4	Order-0666: Iret Article 0002	600.0	0 \ 1	10	0	-
<input checked="" type="checkbox"/> 5	Order-0815: Iret Article 0002	600.0	0 \ 1	50	0	-

4.4 Import of marking texts

ERP2Cayman can accept marking texts from the ERP system. In column **D** (column name is arbitrary) an individual marking text can be stored for each article. This text replaces the (standard) text created in the Cayman article file. Thus, for example, lot numbers etc. can be transmitted from the ERP system to Cayman.

Here the Excel list is extended by a column D. In the marking texts all variable fields (@ tags) known from Cayman like time, date, counter etc. can be used.

Resulting Cayman file:

From the Excel list, Cayman has taken not only the part number and order quantity but also the print text and, as seen in No. 10 of the list, inserted the current date in the variable field '@2'.

You can find this example in '\data\importXLS\importXLS2.xlsx'.



importXLS2